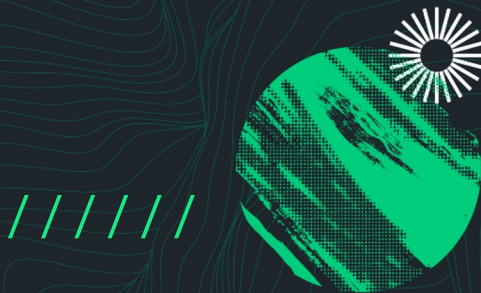




New Relic Observability for SAP Solutions

Klaus Kurz

Sr. Director - Customer Adoption



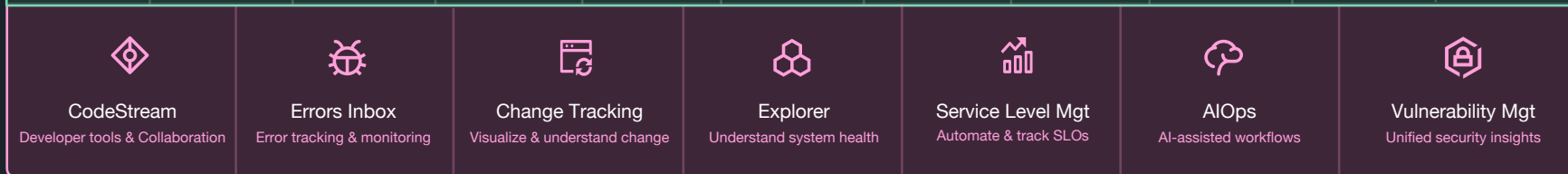
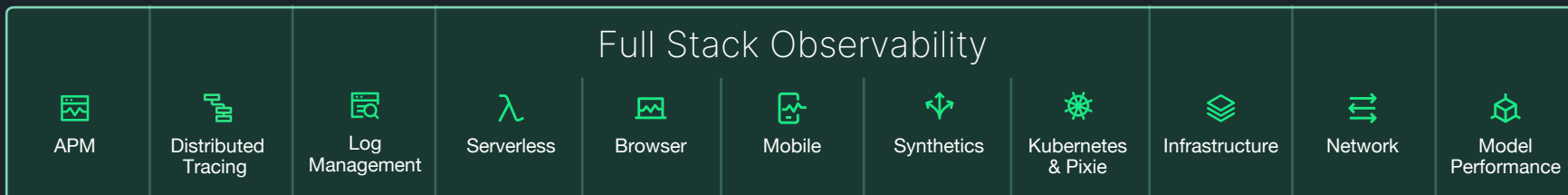
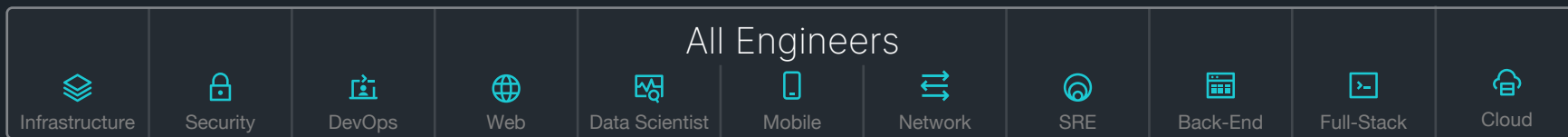
Monitoring vs. Observability



The Most Common Observability Use Cases



End-to-End Observability Across the Software Lifecycle



Telemetry Data Platform

Alerts | Dashboards | Analytics | Open Ingest APIs & OpenTelemetry | 500+ Integrations | Infinite Cardinality | Multi-Cloud

And what about SAP?

What We Hear from Customers...

Business
Process Flows



- ▶ Business processes are interrupted due to delays in IDOCs, RFCs, Batch jobs
- ▶ Business Users experience slowness, receive errors
- ▶ We need to be able to trace issues end-to-end at transaction, order, invoice level

What We Hear from Customers...

Slow
Resolution Time








- ▶ Manual process for root cause analysis
- ▶ Requires digging through many screens, tables, logs
- ▶ Tribal knowledge and skills dependency
- ▶ Operational data silos introduce complexity

Observability for SAP

“When SAP sneezes, the Business catches a cold”

SAP increasingly integrated in **end-to-end IT architectures**

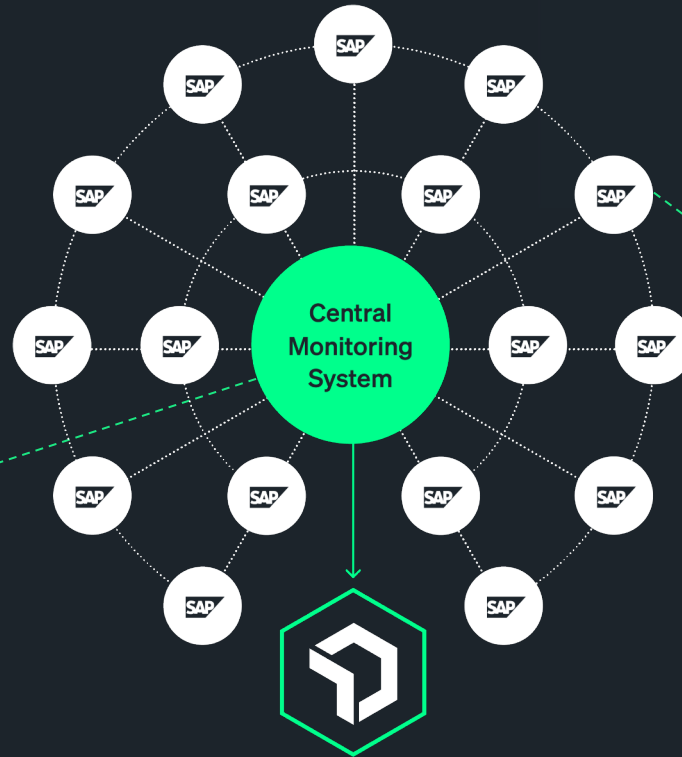
Uptime, reliability, performance and user experience are paramount

end users	other app & platform teams	business stakeholders
Business & Processes	Brand, e-Commerce, B2B2C, DTC, ... Retail & Distribution, ... Supply chain, Plan to Produce, warehousing, ... Order to Cash, Procure-to-Pay, ... Finance, HR, Payroll, TEM, BI & Analytics, ...	
Experience	Browser, Fiori, BTP, other Apps	
Integration	PI/PO, APIs, Java, Web Services, BTP, ...	
Applications	Transactions, IDOCs, RFCs, Queues, Background Jobs, Programs, Traces, Transports, Logs, ...	
Infra & Cloud	SIDs, Application Server Instances, Databases, Hosts, HTTP Server, Logs, ...	
SAP teams & practitioners		

Agentless Architecture

Location of New Relic connector

[Any SAP server with BASIS 740 or above]



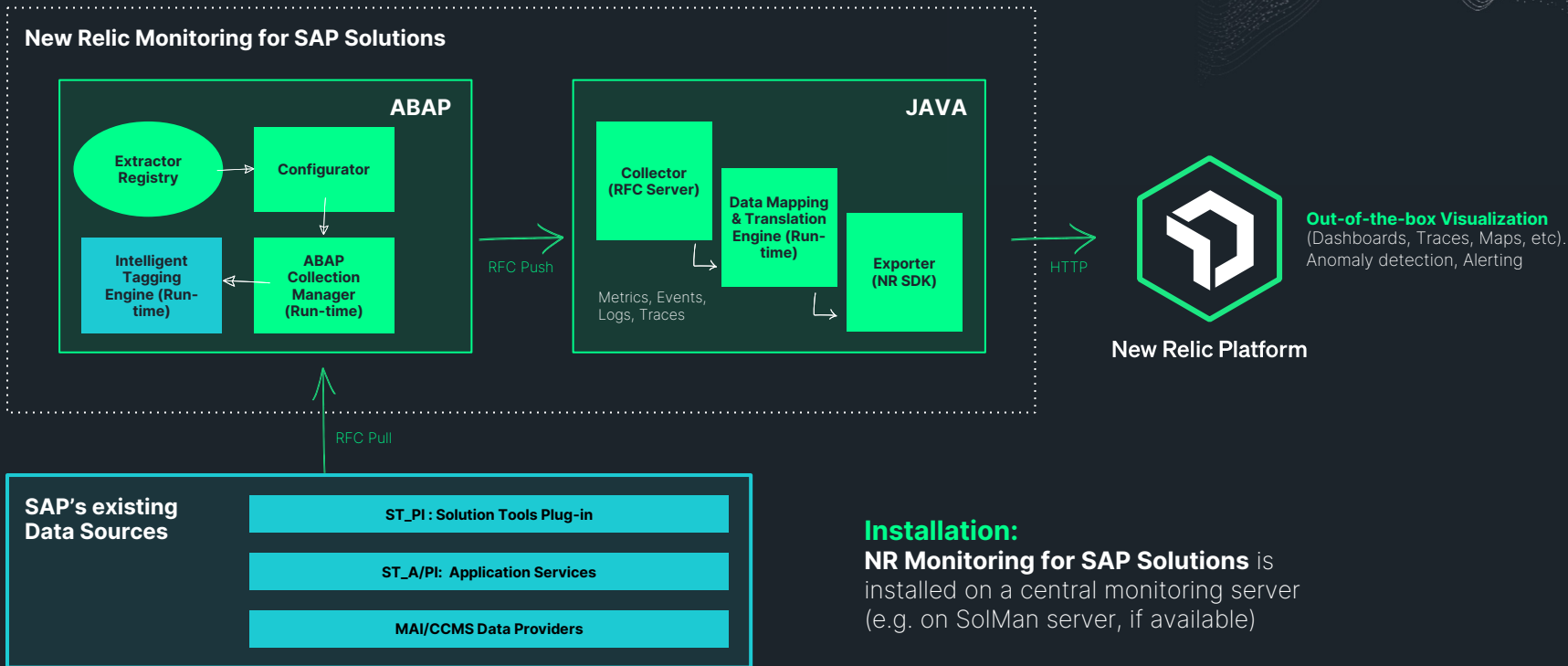
Monitored Systems

No need to install monitoring agents in SAP production servers

Only requires *Authorized SAP System-User*

New Relic Platform

High Level Architecture



Our Approach

SAP Systems



Non-SAP Systems



New Relic Observability Platform



Proactive alerting



3 or 4 clicks to root cause



User friendly visualizations for SAP



Complement SAP Solution Manager



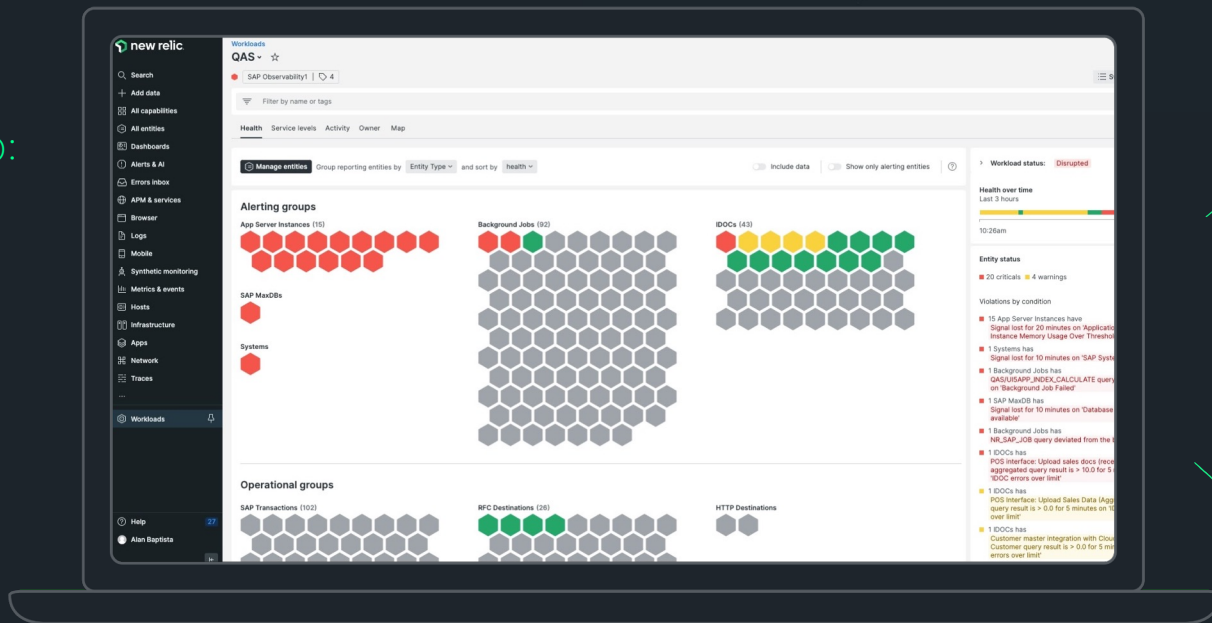
Centralize visibility across SAP and Non-SAP systems

Centralized View of Overall Health of SAP Systems



React and resolve faster, by not having to:

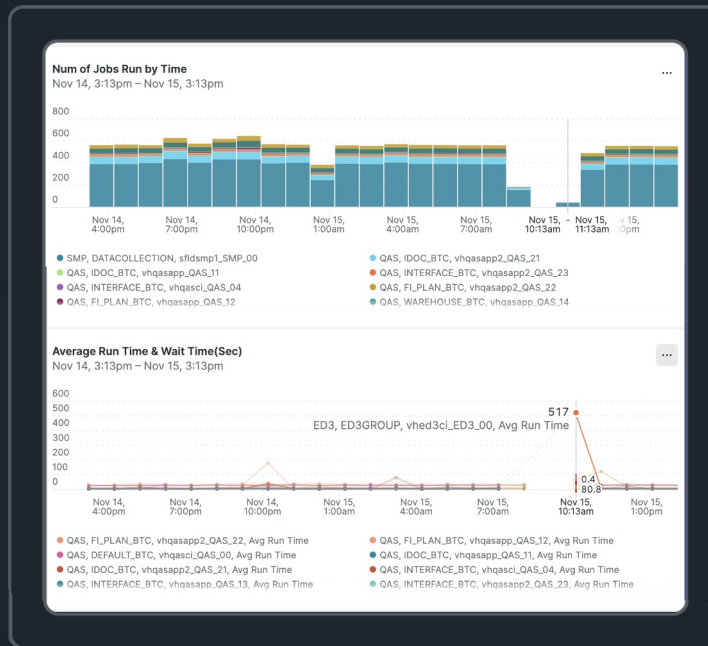
- > Log into multiple systems
- > Hunt through multiple transactions
- > Write custom reports



Powerful Visualizations, Out-of-the-Box

'Quickstart' of Dashboards, System Views, Alerts

* E.g. Visualize the even distribution of Background Jobs and spikes in resource usage



End-User Experience Monitoring

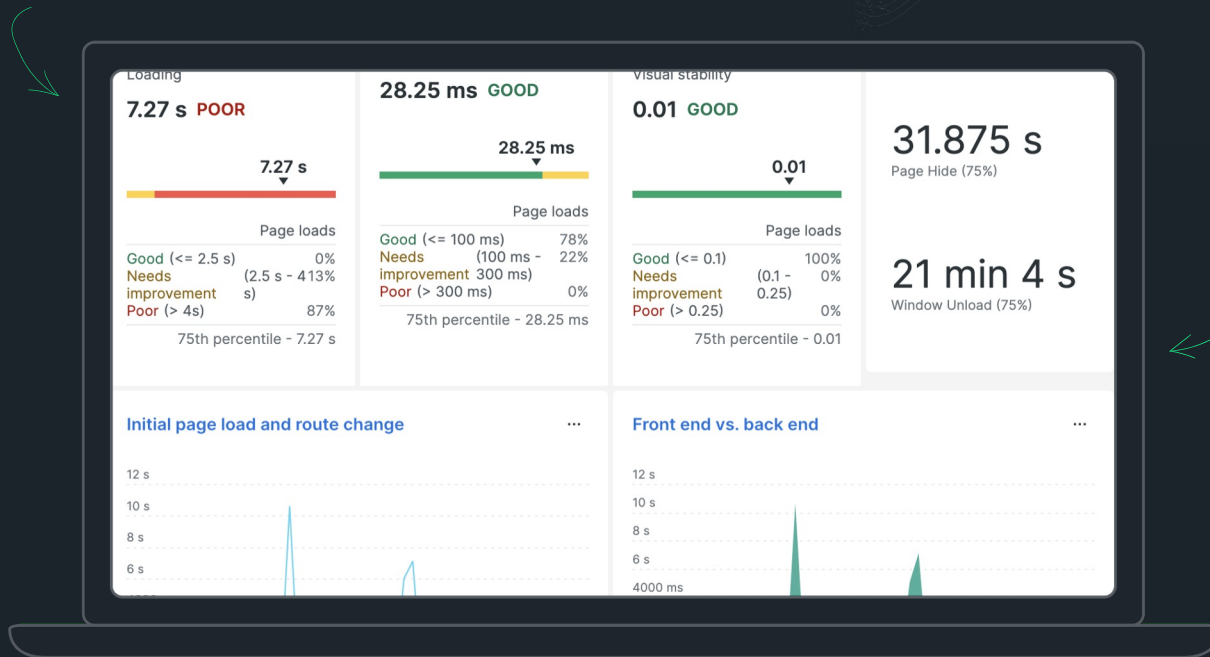
Out-of-the-box Dashboards for SAP Fiori front-end

> Overall performance from the end user's perspective

> Page view and Ajax call data

> Page errors that may eventually lead to problems

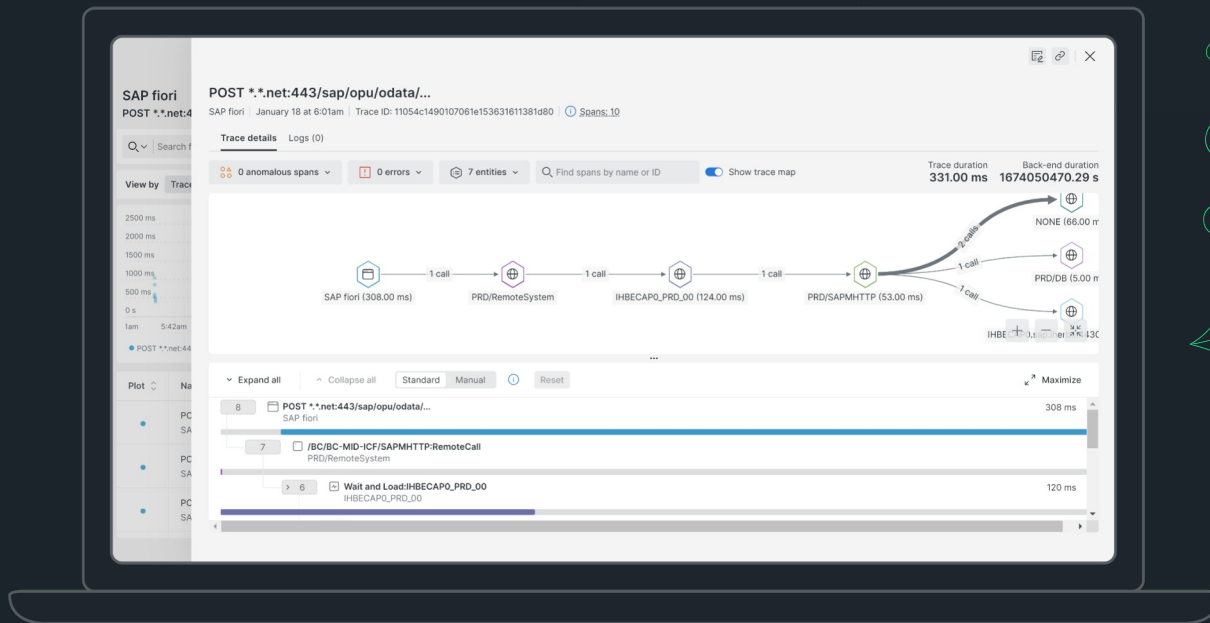
> Automated Alerts



End-to-End Distributed Traces for Fast Root Cause Diagnosis

Distributed Traces are captured for every transaction executed

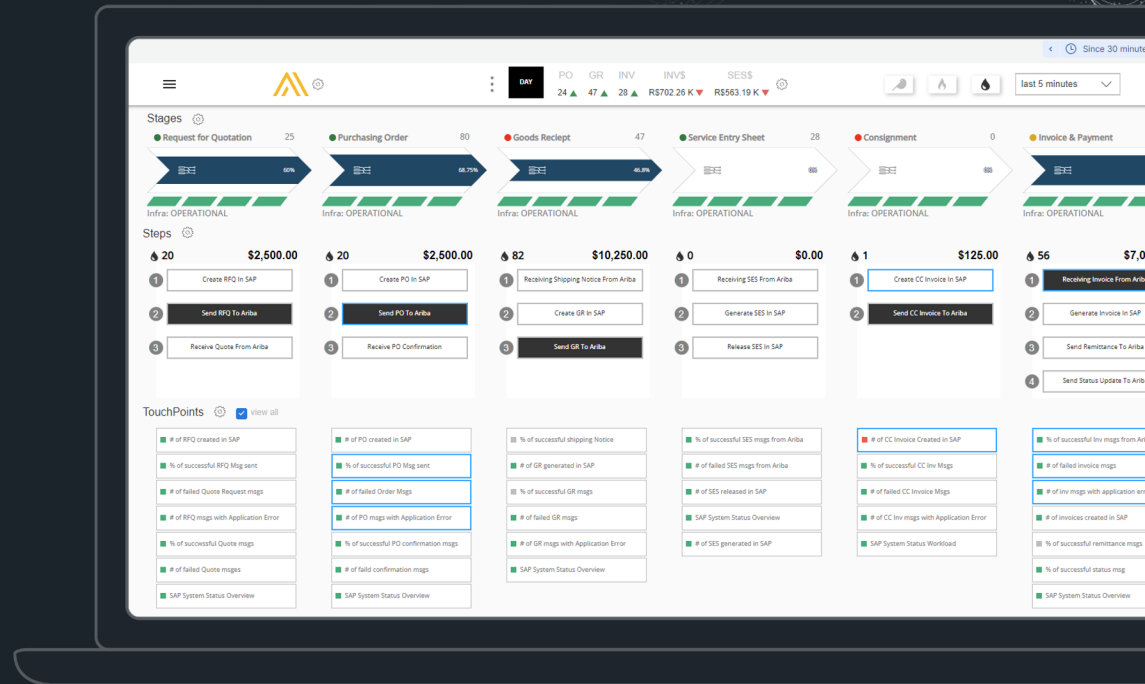
From the SAP Fiori front-end, directly to the SAP back-end systems such as databases and programs



SAP Business Process Monitoring

e.g., Procure-to-Pay Process

- ▶ Real-time dashboard of process flow
- ▶ Alerts on Business Metrics / KPIs
- ▶ Identify bottlenecks / \$ impacts
- ▶ Drill down to Application and Infra layers to resolve



Unique Offering for SAP Monitoring



Easier to
onboard



Deep insights
into SAP



Simpler Pricing



Thank you.

Klaus Kurz
kkurz@newrelic.com

